

# GLACIER

---

## NEW ZEALAND FOOD & BEVERAGES EXPORTER

---

Exporting a range of  
food and beverages products  
that are grown or made in New Zealand.

# glacier investments

New Zealand is renowned for its high quality, natural and healthy food and beverage products. We currently work and invest together with local growers and manufacturers to produce high quality fruit and beverages in New Zealand.

We are a collective of quality New Zealand food and beverages products for export to the key markets in South East Asia. We work in collaboration with our trading partners for export sales throughout Asia.

- Kiwifruit juices
- Cherry juices
- Colostrum Powder, Lactoferrin Milk Powder, Probiotics Milk Powder
- Natural Yoghurt Mix
- Cherry Wine
- Red and White Wines
- Pet foods – dry and chilled dog and cat foods





# NZ LIQUID KIWIFRUITJUICE

*Original*  
**KIWIFRUIT**  
*Stronger Kiwi taste*



**KIWI+MELON**  
*Refreshing cooling  
delicious*



**GOLD  
KIWIFRUIT**  
*Rich, smooth,  
revitalizing!*

**KIWIFRUIT  
WITH ALOE VERA**  
*Soothing for the  
digestive system!*



## NZ LIQUID KIWIFRUIT JUICE

**NEKTA Liquid Kiwifruit** uses Kiwifruit solely grown in New Zealand, fruit recognised as setting the standard in quality, flavour and nutritional value. We developed a process for turning this beautiful fruit into a satisfying, refreshing fruit drink, protecting the taste, and ensuring much of the natural goodness is retained. This distinguishes Nekta Liquid Kiwifruit from fruit juices, which are made from extracted juices only. With Nekta, the fruit is in the bottle.



### Nutritional Basis of Nektar Kiwifruit

A study by Rutgers University New Jersey 1997 found kiwifruit to be the most nutrient dense fruit commonly available, and since then over 400 published studies have confirmed its value, offering the B vitamins B1, B2, B6, Niacin and Folate, Vitamins C, E, K, and minerals calcium, iron, magnesium and zinc. We add further **Vitamin C**, so every glass of Nektar Kiwifruit is rich in this essential antioxidant, adding to the naturally occurring antioxidants Lutein and Zeaxanthin, both beneficial for protecting our eyes against progressive light damage. All Nektar Liquid Kiwifruit drinks contain Pectin, a soluble fruit dietary fibre, contributing to the reputation kiwifruit products have earned as **assisting digestion** and regularity – a happy you. Kiwifruit is Prebiotic, helping maintain a healthy bacterial balance in the small intestine. Recently, an enzyme in kiwifruit, Actinidin, has been found to assist in the breakdown of proteins, further enhancing digestion.

**Nektar uses all the flesh of the fruit, with the rich nutritional value it delivers.**



### NEKTA Liquid Gold Kiwifruit

A different fruit from a different vine, Gold Kiwifruit is nutritionally similar to the green kiwi, but with some variations in quantities of particular nutrients. Gold Kiwi has slightly more polyphenol antioxidants, more enzymes Lutein and Zeaxanthin which benefit our eyes, a higher level of B Group vitamins. Because we add Vitamin C and fibre to both Green and Gold, in Nektar these levels are similar. The main reason for choosing to drink either Green or Gold Nektar is taste.

Gold Kiwifruit is a lighter taste often thought to be sweeter, with a more complex flavour reminiscent of a "citrus melon". It is beautifully refreshing, full of sub-tropical sunshine, the Golden Taste.



## Benefits of Kiwifruit juice

- #1 Improves Digestive Health
- #2 Anti Oxidant Protection
- #3 Help Fight Diabetes & Heart Disease
- #4 Good for Heart & Muscle Function
- #5 Manages Blood Pressure
- #6 Supports Pregnancy
- #7 Boosts Your Immunity
- #8 Improve Respiratory Function
- #9 Protects Against Vision Loss
- #10 Improve Bowel Function Of IBS
- #11 Good for Bone Development
- #12 Ease Constipation



**COLOSTRUM POWDER**



NEKTA Pure Bovine Colostrum Powder uses only high-quality Bovine Colostrum, collected within the first 72 hours after gestation. It is certified under strict quality standards.

Bovine Colostrum is the very first milk produced by cows after giving birth, containing high levels of immunoglobulins (greater than 20% IgG, IgM & IgA) and multiple concentrated nutrients, growth factors, vitamins and minerals to support immune health.

NEKTA Pure Bovine Colostrum Powder is easy to use. Just simply add a sachet (1g) of colostrum powder into 30 - 50 ml water (below 50°C), milk, porridge or include as part of meal preparation.



**NEKTA Colostrum Powder**



**NEKTA Lactoferrin Milk Powder**



**NEKTA Probiotics Powder**

### Benefits of Lactoferrin

- #1 Good for children's health
- #2 Improves immunity
- #3 Enhances iron absorption
- #4 Regulates intestinal health
- #5 Broad spectrum anti-infection
- #6 Promotes healthy bones & teeth



### Benefits of Probiotics

- #1 Everyday health for adults
- #2 Everyday health for children
- #3 Supports intestinal microbiome
- #4 Promotes healthy bowel function



### NATURAL YOGHURT MIX



NEKTA Natural Yoghurt Mix is made from New Zealand whole and skim milk powder, with eight strains of healthy probiotic bacteria, and using only natural ingredients. It is an economical way to get the health benefits of yoghurt along with the unbeatable taste a freshly made yoghurt provides.

NEKTA Natural Yoghurt is a wonderful breakfast food with cereals and fruits, can be used in sauces and dressings to give a fresh low fat alternative to mayonnaise, cream cheese, sour cream.



There is a true story of heritage that is shared by Crown Range Cellar and Glacier Investments. Our stories can be traced back to the gold rush days in Central Otago. In 1869, it was called the 'New Gold Mountain' in a region known for its harsh conditions, where 2,000 Chinese goldminers came to Central Otago, New Zealand.

Crown Range Cellar is a modern wine producer that strives to create exceptional, premium wines. They constantly push the boundaries by experimenting with different styles of winemaking. This is evident in the award-winning wines that Crown Range Cellar has crafted over time, such as:

#### **AWARD WINNING WINES**

- Trophy for Best Pinot Noir, International Wine & Spirit Competition, 2015
- Dual Trophies for Pinot Noir, International Wine Challenge, London 2017
- Gold Medal & Trophy for Best Semi Aromatic White Wine, International Wine & Spirit Competition, London 2019



#### **China Girl, Pinor Noir 2016 (Bendigo, Central Otago)**



Bob Campbell, Master of Wine, has awarded 93 points to China Girl for being a scented, fruity wine with typically ripe Bendigo character, suggesting plum, dark cherry, spice, anise and raspberry with plenty of spicy oak influence.

The ink-like texture is also very Bendigo. Dense, but quite





ethereal. Better with a little bottle age.



Photo: NZ owner accepts International Wine Challenge Trophy Awards 2017 at The Guild Hall, London.

### **Moon Rock Pinot Gris 2018 (Waitaki Valley)**

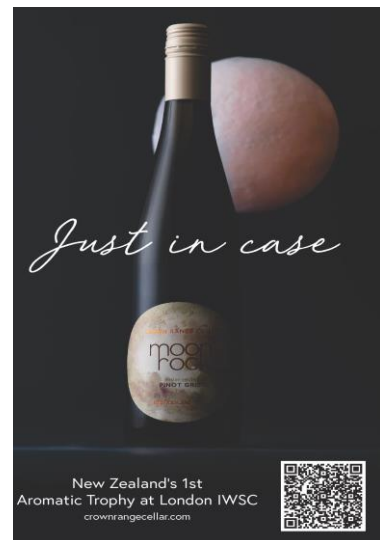


Gold Medal and Trophy for Best Semi Aromatic White Wine (International Wines & Spirits Competition, London 2019).



Inspired by the growing crystals of selenite found deposited around Lake Aviemore, Moon Rock is a mysterious Pinot Gris from the Waitaki Valley - an ethereal place characterised by its cool climate, limestone soils and strange rock formations.

Growing conditions permit a long, late harvest, producing a wine with low acidity, a subtle hint of sweetness, rich texture and a long finish. Great with a range of foods.





**Drowsy Fish Sauvignon Blanc 2016** (Nelson, Marlborough)

**CROWN  
RANGE  
CELLAR**

Aromatic and fresh Sauvignon Blanc with appealing tropical flavours, rich in texture with ripe passionfruit and nettle notes.

A Wine Judge, Sam Kim has awarded 93 points to Drowsy Fish and it is intensely aromatic on the nose, showing feijoa, green rockmelon, nectarine and sweet basil characters, leading to a vibrant palate that is punchy and flavoursome.

This wine offers excellent fruit weight and concentration, brilliantly supported by fine texture and mouth-watering acidity.

**The Stolen Heart, Merlot Malbec 2014** (Hawkes Bay)

**CROWN  
RANGE  
CELLAR**

Grown in the warm, free-draining soils of the Gimblett Gravels, these vineyards are certified organic and produced in limited volume. This seductive range of reds offers concentration of fruit, structured tannin and well integrated oak.

Dense inky purple colour intense aromas of dark berry fruit and chocolate, with spice and warm earth highlights. Bold and powerful on the palate with concentrated flavours of blueberry, dark plum and cocoa. Fine tannins give definition and length to this robust and succulent wine.



**The Stolen Heart, Cabernet Merlot 2014** (Hawkes Bay)

**CROWN  
RANGE  
CELLAR**

Grown in the warm, free-draining soils of the Gimblett Gravels, these vineyards are certified organic and produced in limited volume. This seductive range of reds offers concentration of fruit, structured tannin and well integrated oak.



Concentrated yet, fine and penetrating flavours of dark fruits, red rose and tobacco. Lacy tannins weave through this Cabernet based wine, giving a classical refreshing finesse and carry the complex flavours to linger on the finish.

**RUBY'S GOLD CHERRY WINE**



To celebrate Central Otago's rich goldmining history, its fertile soils and its world renowned fruit, New Zealand Cherry Corp is proud to announce the first vintage of a classic port-style, fortified cherry wine: Ruby's Gold.

With approximately 1kg of cherries in each bottle, Ruby's Gold brings the orchards of Central Otago to life in the glass and at the table. Partners well with hard cheeses, marinate fresh cherries in it and serve over ice cream or enjoy a glass by itself at the start or end of the evening. Best served lightly chilled.

**AWARDS:**

- Silver medal, China Wine Competition 2020
- Silver medal, London Wine Competition 2020, 2021
- Silver medal, New Zealand Fruit Wine Awards 2019, 2020



**ADDICTION FOODS**



Welcome to Addiction Pet Foods. In 2002, Addiction Foods was born when the co-founder saw a need for pet food that was free from artificial ingredients and preservatives. New Zealand offers a wide range of meat proteins and other ingredients that are all-natural, grain and gluten-free, and hormone and steroid-free.

Since setting up a manufacturing plant in New Zealand, Addiction has made its name as a leading premium pet food manufacturer for cats and dogs with skin and gastro-intestinal conditions or other allergies caused by highly processed food.

**DOG FOOD**



**Graze – Grain Free New Zealand Beef, Adult**



**Lake – Grain Free New Zealand Duck, All Life Stages**



**Ocean – Grain Free King Salmon, All Life Stages**



**Pasture – Grain Free New Zealand Lamb, All Life Stages**

**CAT FOOD**



**Graze – Free-range, Grass-fed NZ Beef, All Life Stages**



**Roost – Cage-free NZ Chicken, All Life Stages**



**Pasture – Free-range, Grass-fed NZ Lamb, All Life Stages**



**Natural, artisan gourmet pet food you can trust.**

Because we love and care for our pets as family, Addiction Foods create only the finest food for them, using fresh ingredients, high quality meats, speciality herbs and superfoods.

**AWESOME PAWSOME TREATS**

Awesome Pawsome promises healthy and delicious snacks for dogs, made from all natural colours and flavours inspired by human recipes, letting your pets enjoy the food you love. Discover a whole new range of awesome treats specially formulated for your awesome pets. There are Fancy Treats, Meaty Treats and Veggie Treats.



**Salmon Supreme Recipe**



**Baconmania**



**Super Pumpkin Recipe**



**Peanut Butter & Cranberry**



**Chicken Dumpling**



**Beefy Bite**



**BUTCH PET FOODS**

The Butch Label range are established, proven 100% guaranteed products. Each roll from the range is distinctly different and unique. All Butch Label rolls are enriched with Kelp and Omega-3 and naturally contain the correct level of Omega-6.

Butch Black Label is a high performance premium diet for maximum energy, strength and vitality for dogs.

Butch White Label is an excellent choice for red meat intolerant or sensitive dogs. When fed as your dog's sole diet, this can reduce staining around the mouth and eyes.

Butch Blue Label is a delicious meal for both cats and dogs. It is enhanced with Omega-3 rich Tuna, Yucca for reduced faecal odour, Parsley for fresh breath and Taurine for a healthy heart and eyes.



**OUR AMAZING STORY**



There is a strong family connection to Otago and New Zealand from the early gold-rush days in the 1870s. Five generations later, Choie Sew Hoy's great-grandson, Donald Sew Hoy and his family are managing the trading company, Glacier Investments Ltd with a long history.

Choie Sew Hoy (1836-1901) arrived in New Zealand from Guangzhou, China in 1868. He later became a famous Chinese goldminer and merchant, who opened stores in Dunedin and Queenstown, and goldmining in Queenstown, Central Otago. So the Sew Hoy Company was established in Dunedin, New Zealand in 1869.

Choie Sew Hoy invented a gold dredge with Scottish engineers in Dunedin in 1888, which dredged up gold and sparked a gold-dredging boom in Otago. He was recognised as the most successful goldminer in New Zealand.

Choie Sew Hoy was inducted into the New Zealand Business Hall of Fame in 2017, remembered as a goldminer, merchant and entrepreneur. This made the large Sew Hoy extended family very proud.





Choie Sew Hoy's grandson, Hugh Sew Hoy OBE (1901-1996), who was Donald's father, opened Sew Hoy & Sons Ltd to manufacture clothing in New Zealand so the Sew Hoy garment manufacturing company was established in 1955.



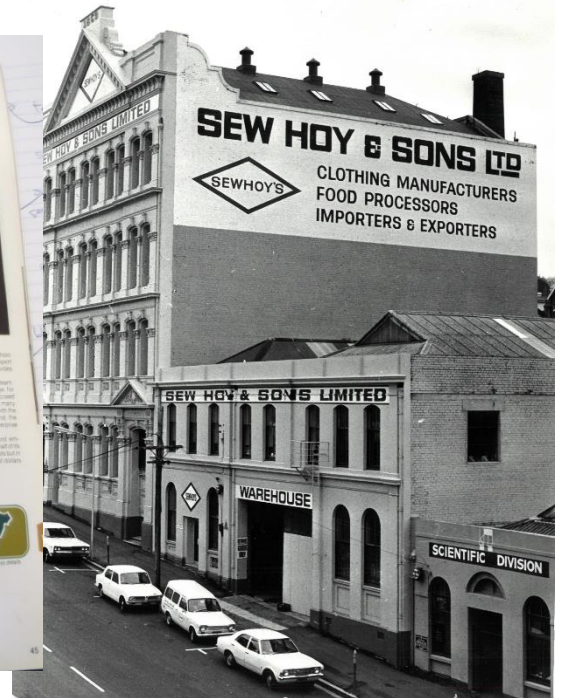
In the 1960s, 1970s and 1980s, Hugh Sew Hoy was regarded as one of New Zealand's leading garment manufacturers in his time. The House of Sew Hoy designed garments became well known throughout New Zealand.

In 1971, Sew Hoy & Sons Ltd won the prestigious Export Award from the New Zealand Government. In 1981, Hugh Sew Hoy was honoured by the New Zealand Government with The Order of the British Empire (OBE) medal for his outstanding services to New Zealand business and community.



THE HON. N. L. SHELTON, MINISTER OF INDUSTRIES AND COMMERCE, PRESENTING AN EXPORT AWARD PENNANT TO MR HUGH SEW HOY, CHAIRMAN OF DIRECTORS, SEW HOY AND SONS LTD., AT THE MAIN TOWN HALL, DUNEDIN, NEW ZEALAND, DECEMBER 18, 1971.

Sew Hoy and Sons Ltd became a major employer with over 700 staff and 6 factories in Dunedin and Christchurch. Managing Director, Donald Sew Hoy was appointed as a spokesman for the New Zealand Apparel industry during negotiations for the New Zealand-Australia Free Trade Agreement (NAFTA) in the 1980s.



In 1990, Donald Sew Hoy QSM and Jennie Sew Hoy QSM established Glacier Investments Ltd as a clothing importer and wholesaler, and relocated to Auckland for business expansion.

Glacier Investments Ltd have been manufacturing in China for 30 years and contracted factories in China and Bangladesh, producing over three million garments a year for major retail chains and department stores in New Zealand and Australia.

Chloe Sew Hoy's great-great granddaughter, Angela Sew Hoy is a fifth generation descendant, who currently works as a Director at Glacier Investments Ltd with her parents, Donald Sew Hoy QSM and Jennie Sew Hoy QSM.

Angela is a trained accountant and graduate of Otago University (Bachelor of Commerce) and University of Auckland (Master of Business Administration). She is a Winston Churchill Fellow.



**NEW ZEALAND-CHINA FREE TRADE AGREEMENT**

NEW ZEALAND – CHINA FREE TRADE AGREEMENT SIGNING  
BEIJING, APRIL 2008



NEW ZEALAND – CHINA FREE TRADE AGREEMENT SIGNING  
BEIJING, APRIL 2008



Top Left: Donald Sew Hoy, Jennie Sew Hoy with Chris Carter, Minister of Education (New Zealand) and Peter Kaiser at the Great Hall of the People, Beijing

Bottom Left: Prime Minister Helen Clark (NZ) and Premier Wen Jiabao (China) stand with Phil Goff, Minister of Trade (NZ) and Chen Deming, Minister of Commerce (China) signing the FTA at the Great Hall of the People, Beijing

Top right: Donald Sew Hoy, Jennie Sew Hoy and Prime Minister Helen Clark of New Zealand

Bottom right: Donald Sew Hoy, NZ Business Leaders and Officials with the Prime Minister Helen Clark (NZ) and President Hu Jintao (China) at a Banquet held at the Great Hall of the People.

On 7 April 2008, Donald and Jennie Sew Hoy were invited by the Prime Minister of New Zealand, Hon. Helen Clark to accompany the PM and her delegation to Beijing, to witness the signing of the New Zealand-China Free Trade Agreement (NZCFTA) at the Great Hall of the People, Beijing. New Zealand was the first OECD country to sign a comprehensive free trade agreement with China.

**OUR AWARDS OF EXCELLENCE**

Choie Sew Hoy's great-grandson, Donald Sew Hoy QSM and Jennie Sew Hoy QSM were awarded with the Queen's Service Medals by the New Zealand Government for services to the business and Chinese communities in 2008.



Donald Sew Hoy QSM became the prestigious Senior New Zealander of the Year in 2015, the first Chinese to be awarded a high honour in New Zealand.

Notable awards for Glacier Investments Ltd included the 'longest supplier to Farmers Trading' since 1959, The Warehouse Group 'Apparel Supplier of the Year' Award in 2006, BNZ NZ Chinese Business Elite Awards in 2012, and the HSBC China Business Awards – 'Mainfreight for Excellence in Export or Import' in 2015.





Left to right:

Angela Sew Hoy, Jennie Sew Hoy QSM, Donald Sew Hoy QSM, Vicki Sew Hoy Willis and Debbie Sew Hoy at the New Zealander of the Year Awards in 2015.

## OUR PRODUCTS

We are confident that Glacier Investments Ltd can export to key markets in China, Taiwan, Hong Kong and Singapore with New Zealand high quality food and beverages that are genuine New Zealand brands. You can trust and enjoy our New Zealand brands, enriched with health benefits, food safety and integrity.



Nekta Kiwifruit juices sold at Countdown and New World supermarkets, NZ  
(Leading Supermarket Chains in New Zealand)

**SOLD IN NEW ZEALAND SUPERMARKETS**



Nekta Kiwifruit Juices sold at Supermarkets, Hangzhou, China

**SOLD IN HANGZHOU, CHINA SUPERMARKETS**

**CONTACT US FOR SALES**

Glacier Investments Ltd  
Level 2/175 Khyber Pass Rd  
Grafton, Auckland 1023  
NEW ZEALAND  
Mob: +64 21 383 358 (Donald Sew Hoy)  
T: +64 9 368 9180  
F: +64 9 368 9181  
E: [angela@glacierinvestments.co.nz](mailto:angela@glacierinvestments.co.nz)